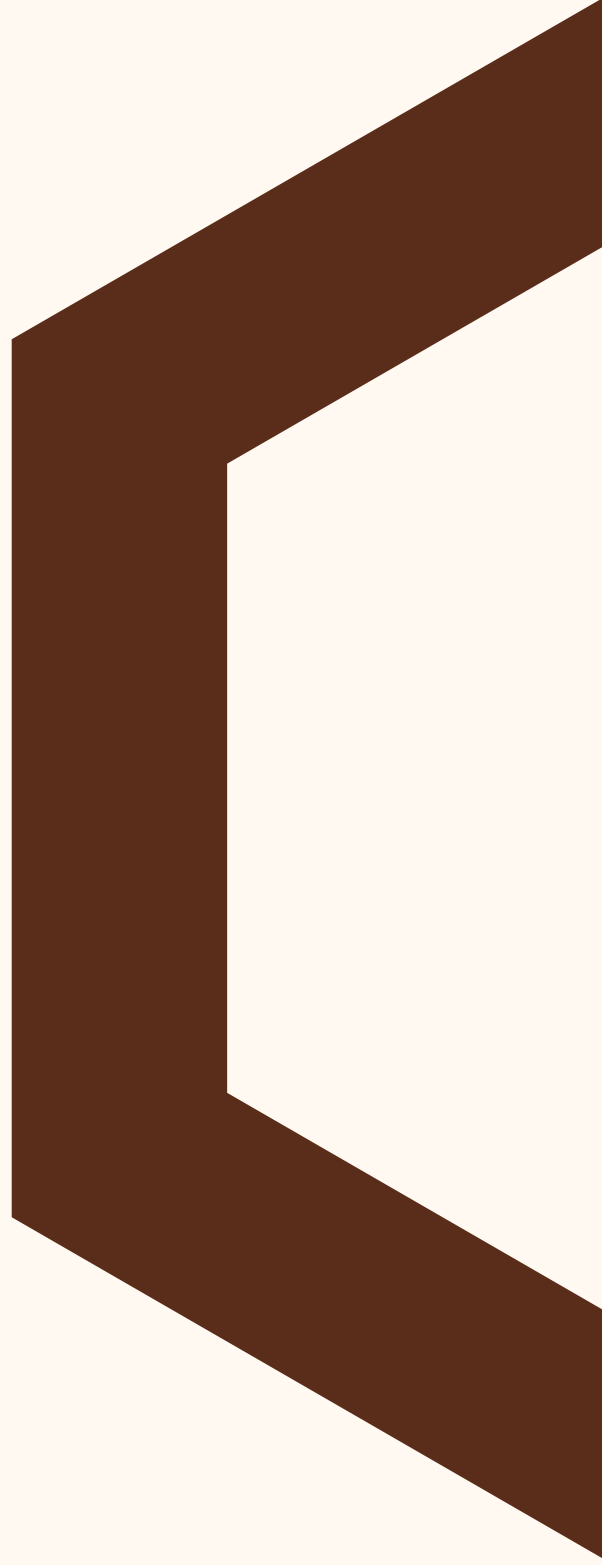
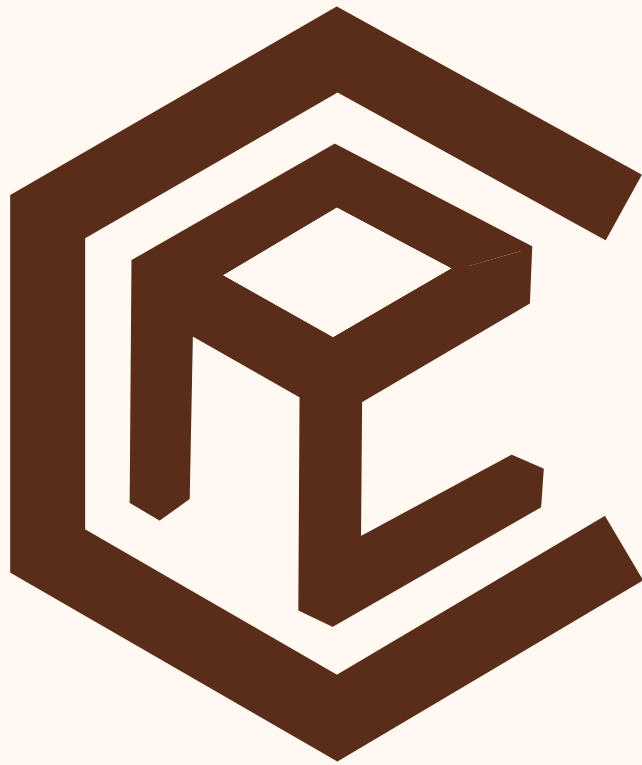


Chrome Royal
Arabian Contracting Co.

COMPANY PROFILE







Introduction:

Chrome Royal Arabian Contracting Co., based in Riyadh and Bahrain, is a dynamic joint venture combining the expertise and innovative capabilities of four industry leaders: Chrome Contracting Ltd., Diamond Life Aluminium W.L.L., Royal Glasses Co. W.L.L., and Diamond Life Aluminium W.L.L. Our comprehensive services span the realms of metal, aluminum, and glass works, setting new benchmarks in design, fabrication, and installation.

With a rich legacy in the field of contracting, we specialize in creating bespoke metal products that blend artistic aesthetics with modern functionality. Our extensive experience, particularly in stainless steel, aluminum, and decorative works, allows us to transform any design vision into reality, ensuring that no creative limit is insurmountable.

Our aluminum fabrication division stands at the forefront of architectural innovation, offering a wide range of products including skylights, structural glazing systems, specialized louvers, and frameless glass systems. By continually investing in cutting-edge technology and collaborating with leading manufacturers worldwide, we ensure that our solutions meet the highest international standards of quality and performance.



Introduction:

In the glass sector, our expertise extends to supplying and fixing various types of glass, from shop fronts to fire-rated glass, along with providing top-tier design, edge polishing, and beveling services. Our state-of-the-art workshop is equipped with the latest machinery, enabling us to execute large-scale projects with precision and excellence. Our dedicated team of professionals is committed to delivering personalized and reliable service, fostering long-term relationships built on trust and satisfaction.

Chrome Royal Arabian Contracting Co. is dedicated to offering a seamless blend of metal and glass works, catering to residential, commercial, and industrial projects. Our commitment to quality, innovation, and customer satisfaction positions us as a leading force in the contracting and fabrication industry across the Gulf region.



Company Strategy:

CHROME ROYAL ARABIAN CONTRACTING Co. began with a gradual approach, leveraging the experiences of its founding companies to enhance its capabilities and efficiency. This progression has led to its current high standard, allowing it to offer superior products in stainless steel, aluminum, glass, and decorative works that stand out in the industry for their exceptional quality.



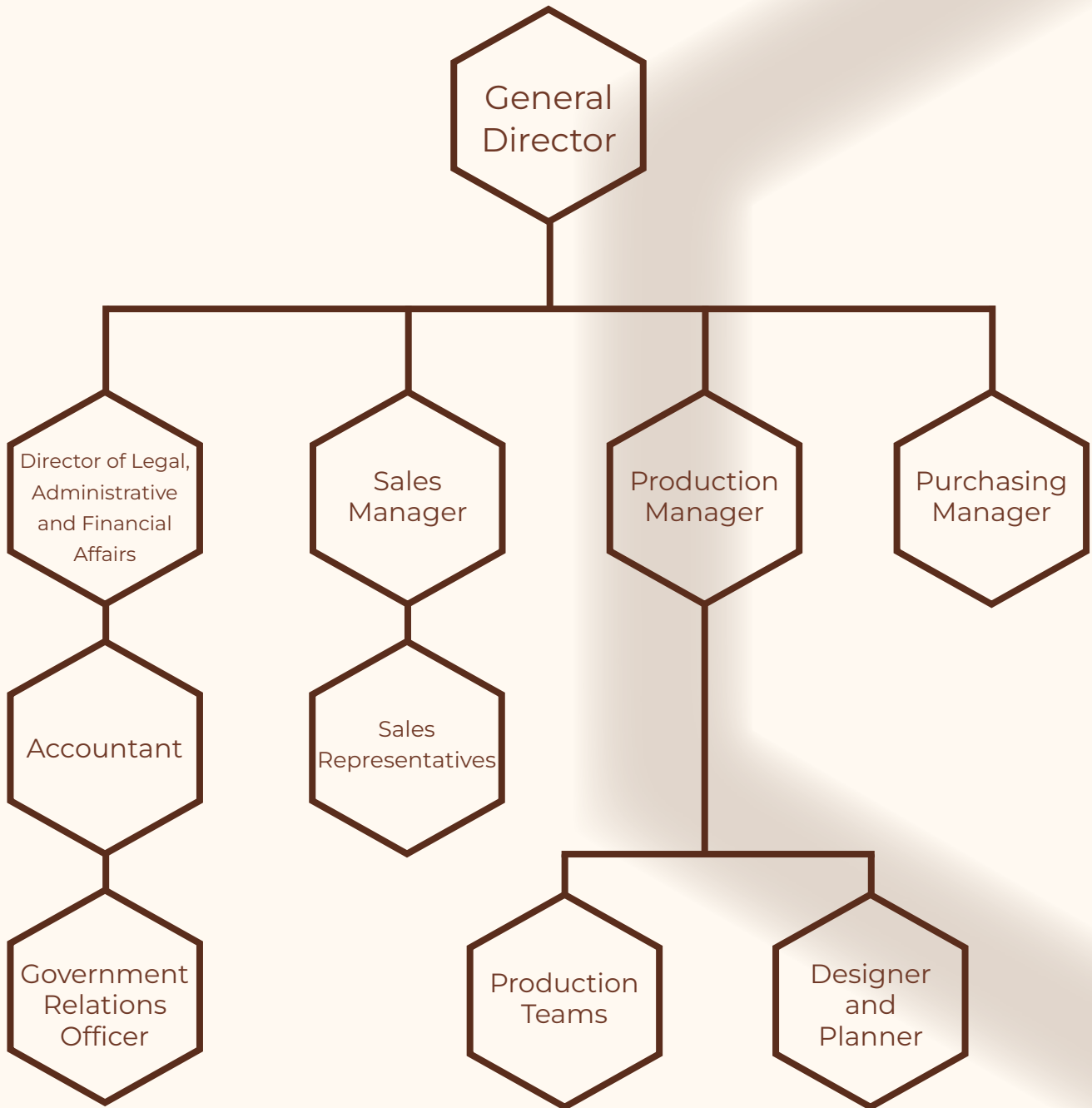
Company Objectives:

The company has established clear and specific goals, guiding its strategic approach. These goals are as follows:

-  Customer Satisfaction
-  Deliver unmatched quality in all products and services.
-  Build and maintain long-term relationships with clients based on trust and reliability.
-  Expand market presence across the Gulf region and beyond.



Organizational Structure:





Company Partners:

Chrome Contracting LTD. Company

Diamond Life Aluminium W.L.L

Real Metals Fabrication Co.

Royal Glass Company W.L.L



The company's approach in its business engagements:



QUALITY:

At Chrome Royal Arabian Contracting Co., we ensure top quality through high industry standards and strict quality control, using premium materials and skilled craftsmanship to create durable and aesthetically pleasing products.



INNOVATION:

Innovation at Chrome Royal Arabian Contracting Co. keeps us ahead in the industry. We use the latest technologies and methods, invest in advanced machinery and training, and consistently deliver cutting-edge solutions in stainless steel, aluminum, glass, and decorative works.



CUSTOMER SATISFACTION:

At Chrome Royal Arabian Contracting Co., customer satisfaction is key. We build trust-based relationships by understanding and exceeding client needs, offering personalized service, timely communication, and reliable support from start to finish. This approach ensures high-quality solutions and long-term partnerships.



Performance Evaluation:

Employee Performance Reviews

Regular performance evaluations for employees ensure individual contributions align with company goals and values.

Quality Assurance Process

Stringent quality assurance processes are in place to monitor and maintain the quality of work delivered to clients.

Client Surveys

Periodic client surveys are conducted to gather detailed feedback on satisfaction levels, areas of strength, and areas requiring attention.

Project Reviews

Post-project reviews provide valuable insights into team performance and areas for refinement.

Continuous Improvement

Through proactive performance evaluation, Chrome Royal Arabian Contracting Co. ensures continual improvement and client satisfaction



Clients:

Chrome Contracting focuses on several parties and destinations in the market, which are as follows:

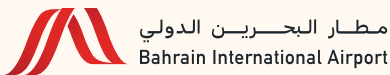
- Individuals with a distinct taste.
- Government agencies and bodies.
- Major companies.
- Individual institutions.



Mall of Dilmunia



مجموعة العالمي
GLOBAL GROUP
للاستثمار التجاري والصناعي
For Commercial And Industrial Investment



Rotana

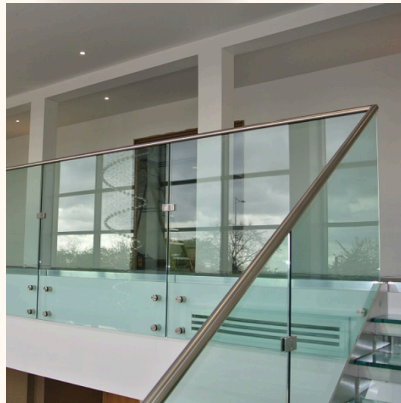
Services





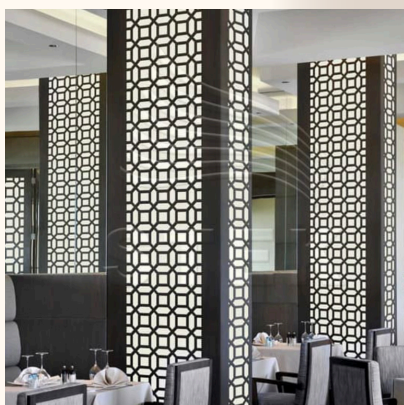
Stainless Steel:

Balustrades:





Columns and Decorations:



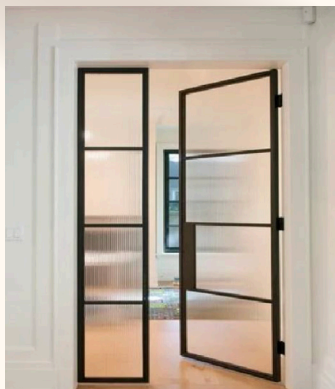


Glass Spacers:



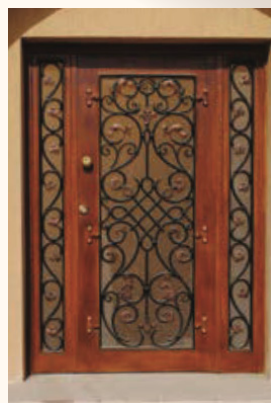
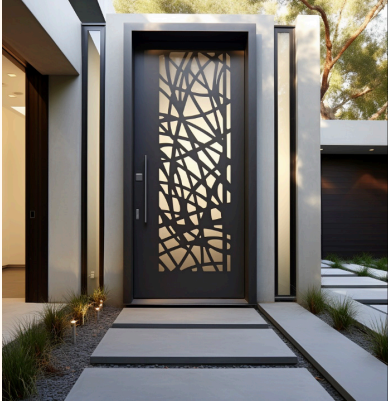


Doors:



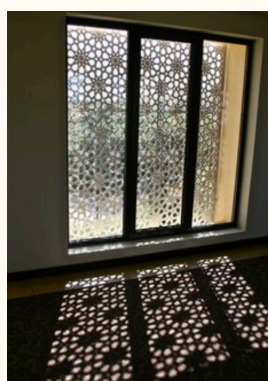
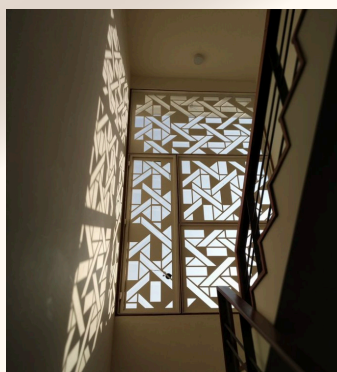


Doors:



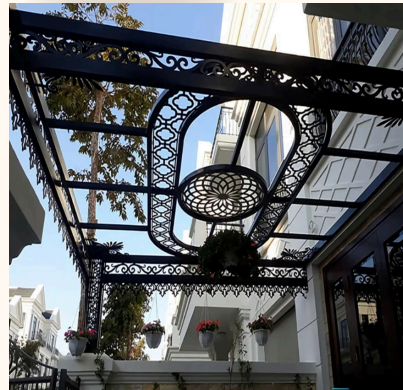
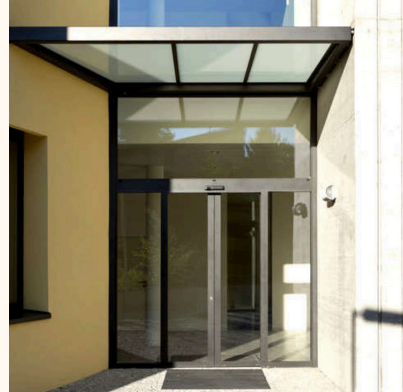


Window:



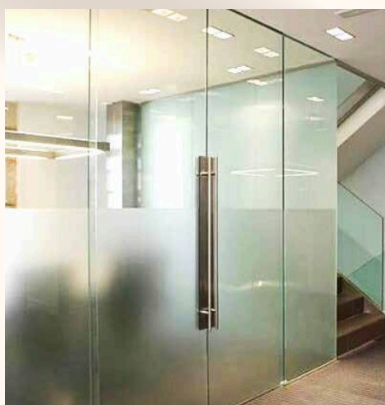


Canopies:



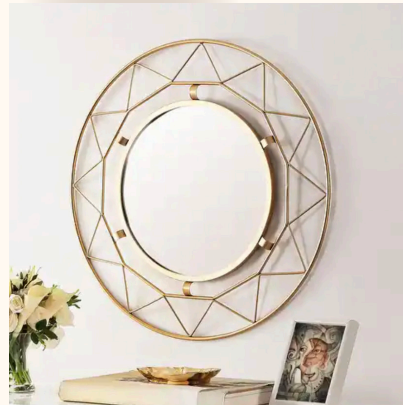


Sandblasting and Staining:



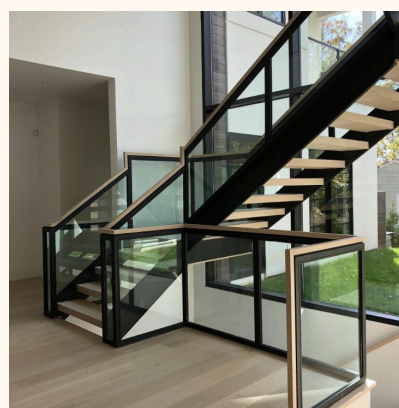
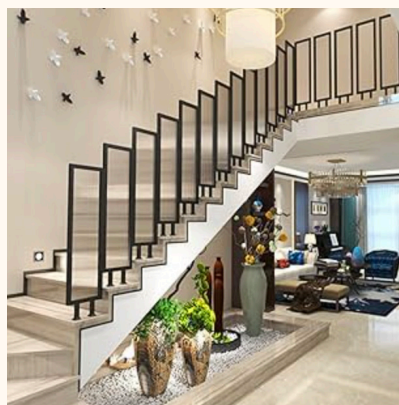
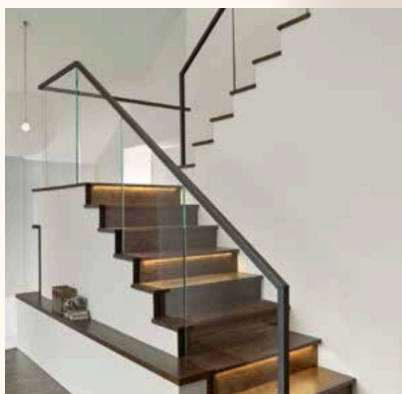
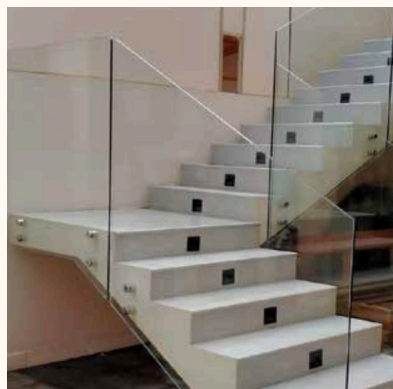
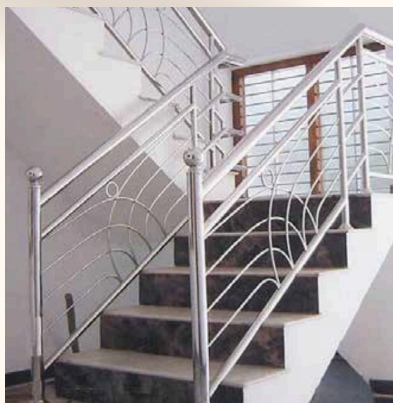


Mirror framing:





Staircase Railing:





Previous Projects



Projects:

Project Name	Owner	Type of contract	Work Nature	Contractual Value
Renovation and maintenance of grain silos in Al-Kharj	Saudi Grains Organization	Sub-contract with Ace Construction Co.	Aluminum works, stainless steel balustrades and iron gates	865, 700
Construction of municipal squares and sports stadiums for a number of neighborhoods in the city of Riyadh	Riyadh Municipality	Sub-contract with Al-Ajlani Contracting Company	Square fencing work	422, 793
Construction of the King Abdullah Petroleum Research Center	Saudi Aramco Company	Sub-contract with Salco	Supplying and installing a stainless steel fountain surface and covering the umbrella poles with stainless steel plates	213, 045
Construction of 300 housing units for the medical services workers of the National Guard in Khashm Al-Aan	Ministry of National Guard	Sub-contract with Ace Construction Co.	Supply and installation of doors	288, 000
Harees machine maintenance	Saudi Grains Organization	Direct Commissioning	Replacing the bases of the iron production lines with new bases and replacing the iron sheets of the tanks with new ones	250, 000



Projects:

Project Name	Owner	Type of contract	Work Nature	Contractual Value
Renovation and maintenance of grain silos in Al-Kharj	Saudi Grains Organization	Sub-contract with Ace Construction Co.	Aluminum works, stainless steel balustrades and iron gates	865, 700
Construction of municipal squares and sports stadiums for a number of neighborhoods in the city of Riyadh	Riyadh Municipality	Sub-contract with Al-Ajlani Contracting Company	Square fencing work	422, 793
Construction of the King Abdullah Petroleum Research Center	Saudi Aramco Company	Sub-contract with Salco	Supplying and installing a stainless steel fountain surface and covering the umbrella poles with stainless steel plates	213, 045
Construction of 300 housing units for the medical services workers of the National Guard in Khashm Al-Aan	Ministry of National Guard	Sub-contract with Ace Construction Co.	Supply and installation of doors	288, 000
Harees machine maintenance	Saudi Grains Organization	Direct Commissioning	Replacing the bases of the iron production lines with new bases and replacing the iron sheets of the tanks with new ones	250, 000



Projects:

Project Name	Owner	Type of contract	Work Nature	Contractual Value
Renovation and maintenance of grain silos in Al-Kharj	Saudi Grains Organization	Sub-contract with Ace Construction Co.	Aluminum works, stainless steel balustrades and iron gates	865, 700
Construction of municipal squares and sports stadiums for a number of neighborhoods in the city of Riyadh	Riyadh Municipality	Sub-contract with Al-Ajlani Contracting Company	Square fencing work	422, 793
Construction of the King Abdullah Petroleum Research Center	Saudi Aramco Company	Sub-contract with Salco	Supplying and installing a stainless steel fountain surface and covering the umbrella poles with stainless steel plates	213, 045
Construction of 300 housing units for the medical services workers of the National Guard in Khashm Al-Aan	Ministry of National Guard	Sub-contract with Ace Construction Co.	Supply and installation of doors	288, 000
Harees machine maintenance	Saudi Grains Organization	Direct Commissioning	Replacing the bases of the iron production lines with new bases and replacing the iron sheets of the tanks with new ones	250, 000



Projects:

Project Name	Owner	Type of contract	Work Nature	Contractual Value
Renovation and maintenance of grain silos in Al-Kharj	Saudi Grains Organization	Sub-contract with Ace Construction Co.	Aluminum works, stainless steel balustrades and iron gates	865, 700
Construction of municipal squares and sports stadiums for a number of neighborhoods in the city of Riyadh	Riyadh Municipality	Sub-contract with Al-Ajlani Contracting Company	Square fencing work	422, 793
Construction of the King Abdullah Petroleum Research Center	Saudi Aramco Company	Sub-contract with Salco	Supplying and installing a stainless steel fountain surface and covering the umbrella poles with stainless steel plates	213, 045
Construction of 300 housing units for the medical services workers of the National Guard in Khashm Al-Aan	Ministry of National Guard	Sub-contract with Ace Construction Co.	Supply and installation of doors	288, 000
Harees machine maintenance	Saudi Grains Organization	Direct Commissioning	Replacing the bases of the iron production lines with new bases and replacing the iron sheets of the tanks with new ones	250, 000



Projects:

Project Name	Owner	Type of contract	Work Nature	Contractual Value
Renovation and maintenance of grain silos in Al-Kharj	Saudi Grains Organization	Sub-contract with Ace Construction Co.	Aluminum works, stainless steel balustrades and iron gates	865, 700
Construction of municipal squares and sports stadiums for a number of neighborhoods in the city of Riyadh	Riyadh Municipality	Sub-contract with Al-Ajlani Contracting Company	Square fencing work	422, 793
Construction of the King Abdullah Petroleum Research Center	Saudi Aramco Company	Sub-contract with Salco	Supplying and installing a stainless steel fountain surface and covering the umbrella poles with stainless steel plates	213, 045
Construction of 300 housing units for the medical services workers of the National Guard in Khashm Al-Aan	Ministry of National Guard	Sub-contract with Ace Construction Co.	Supply and installation of doors	288, 000
Harees machine maintenance	Saudi Grains Organization	Direct Commissioning	Replacing the bases of the iron production lines with new bases and replacing the iron sheets of the tanks with new ones	250, 000



Projects:

Project Name	Owner	Type of contract	Work Nature	Contractual Value
Renovation and maintenance of grain silos in Al-Kharj	Saudi Grains Organization	Sub-contract with Ace Construction Co.	Aluminum works, stainless steel balustrades and iron gates	865, 700
Construction of municipal squares and sports stadiums for a number of neighborhoods in the city of Riyadh	Riyadh Municipality	Sub-contract with Al-Ajlani Contracting Company	Square fencing work	422, 793
Construction of the King Abdullah Petroleum Research Center	Saudi Aramco Company	Sub-contract with Salco	Supplying and installing a stainless steel fountain surface and covering the umbrella poles with stainless steel plates	213, 045
Construction of 300 housing units for the medical services workers of the National Guard in Khashm Al-Aan	Ministry of National Guard	Sub-contract with Ace Construction Co.	Supply and installation of doors	288, 000
Harees machine maintenance	Saudi Grains Organization	Direct Commissioning	Replacing the bases of the iron production lines with new bases and replacing the iron sheets of the tanks with new ones	250, 000

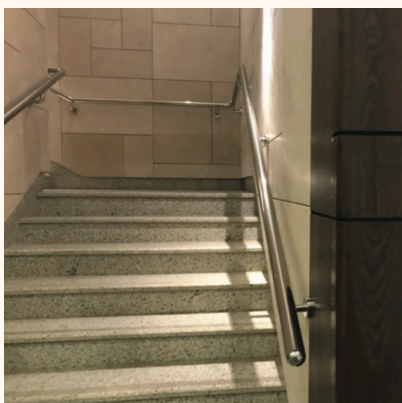
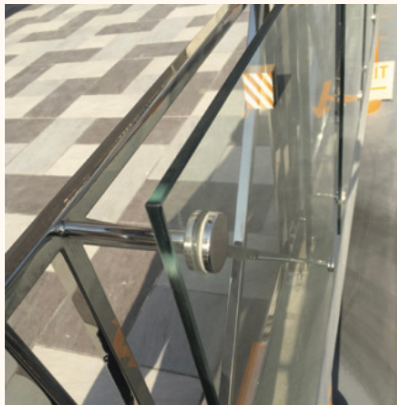
Project Gallery





Robin Plaza Riyadh:

External and Internal Balustrades:





Robin Plaza Riyadh:

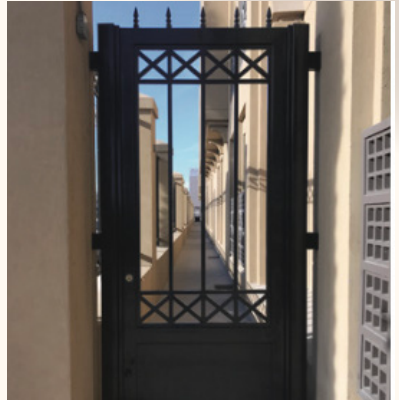
Pergolas - Canopies:





Al-Malqa Village - Riyadh:

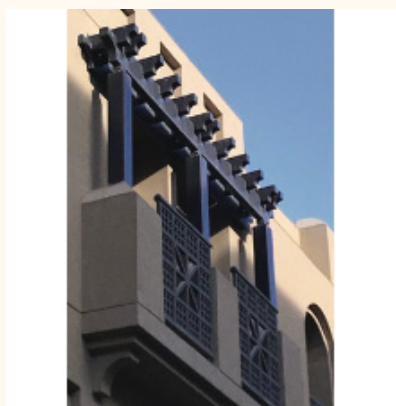
Iron Doors:





Al-Malqa Village - Riyadh:

Indoor Pergolas - Iron Fences:





Jarir Plaza - Riyadh:

Balustrades - External:





Jarir Plaza - Riyadh:

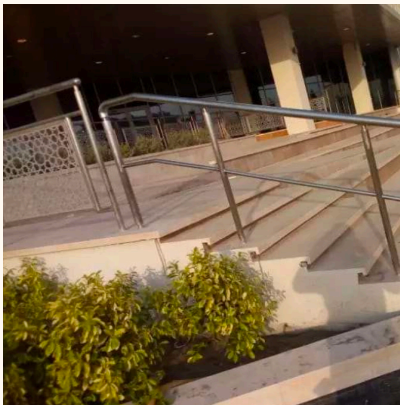
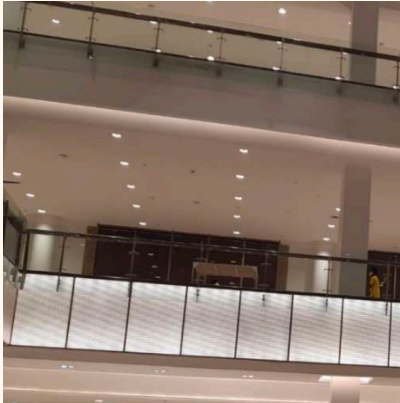
Balustrades - External:





Mall of Dilmunia Amwaj Island - Bahrain

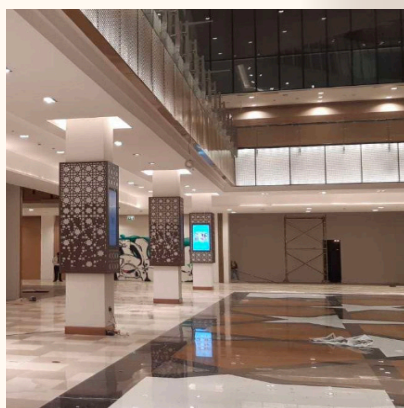
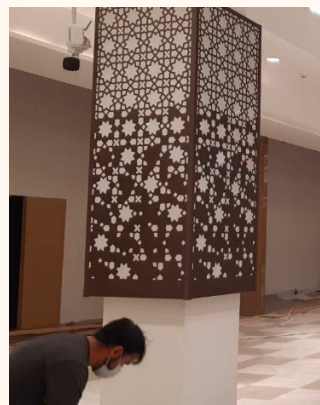
Balustrades - External and Internal:

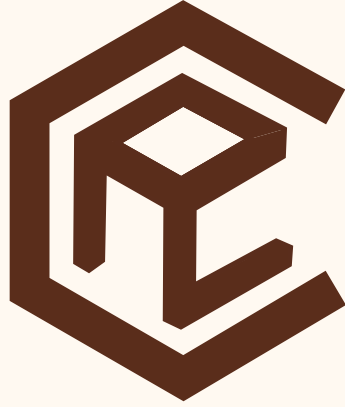




Mall of Dilmunia Amwaj Island - Bahrain

Columns and Decorations:





Chrome Royal

Arabian Contracting Co.

Chrome Royal Arabian Contracting Co.

3818, Ain Saleh - Riyadh 14315
Saudi Arabia - Al Defaa District
Tel: (+966) 0556444066
CRN: 1010968211